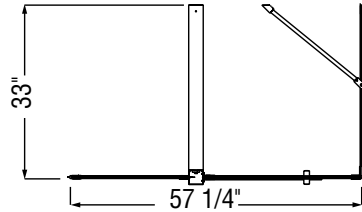
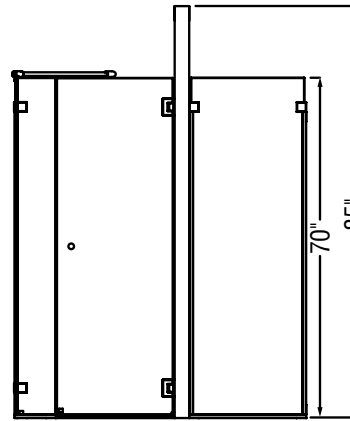
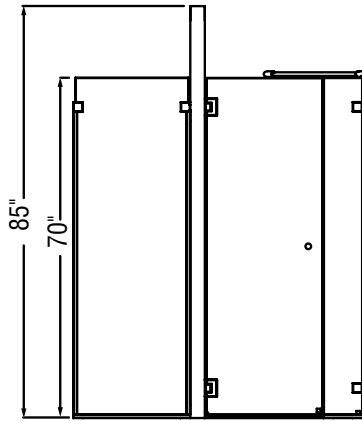
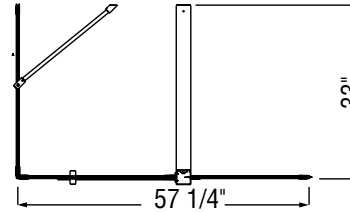


Urban[®] 6036 SA 102783

Left-hand Base & Left-hand Door

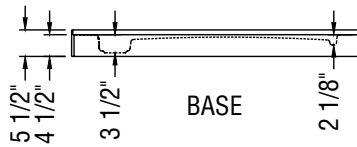
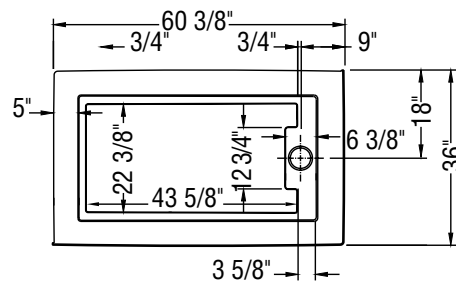
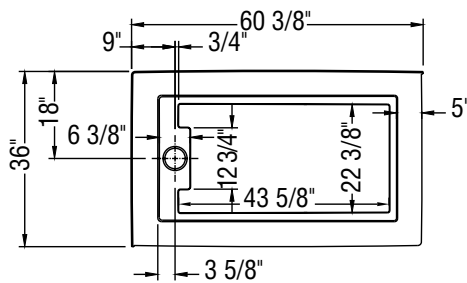


Right-hand Base & Right-hand Door

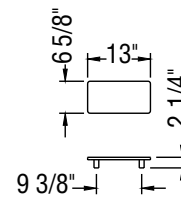
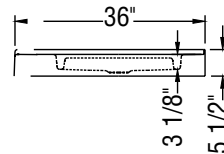


23 1/2"
Door Opening

23 1/2"
Door Opening



BASE



DRAIN CAP

All dimensions are approximate and subject to change without notice. Please refer to website at www.maax.com before installing the unit.

Certifications



Applicable Standards (shower base)

- ANSI Z124.2
- IAPMO/UPC

June, 2005

QUEBEC AND ATLANTIC
600 Cameron, Sainte-Marie
(Québec) G6E 1B2 Canada
Tel.: 1-888-957-7816
Fax: 1-800-201-8308 • (418) 387-9086
After Sales Service:
Tel.: 1-877-GET-MAAX (1-877-438-6229)
Fax: 1-866-819-1324 • (418) 387-9086
MAAX.com

ONTARIO
Tel.: 1-800-565-4025
Fax: 1-800-577-8265
After Sales Service:
Tel.: 1-877-GET-MAAX
(1-877-438-6229)
Fax: 1-866-819-1324
(418) 387-9086
MAAX.com

WESTERN CANADA
4225 Spallumcheen Drive,
Armstrong (British Columbia)
V0E 1B6 Canada
(250) 546-8701 or
(250) 546-3755
Order Desk:
Tel.: 1-800-797-9330
Fax: 1-888-514-4442
MAAX.com

MAAX INC. (USA)
2121 Walter Glaub Drive
P.O. Box 484
Plymouth, IN 46563
Tel.: 1-800-348-2211
(574) 936-3838
Fax: (574) 936-3815
MAAX.com

WESTERN U.S.
2150 Division Street
Bellingham WA 98226
Tel.: (360) 734-0616
1-800-227-7138
Fax: (360) 733-6985
1-800-527-3366
MAAX.com