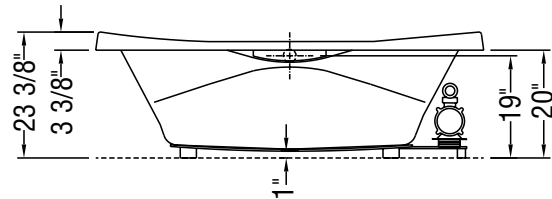
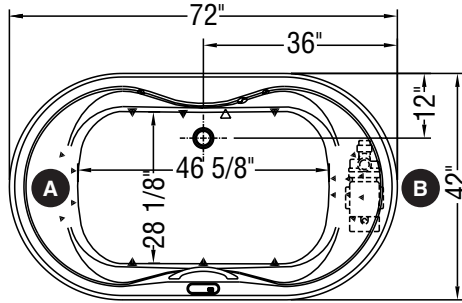
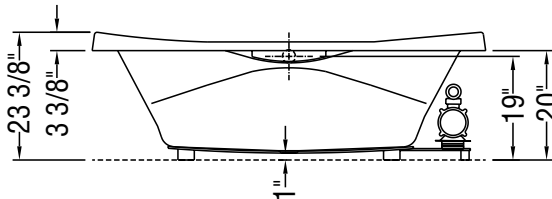
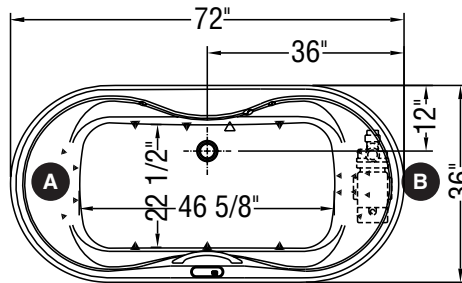


Living[®]

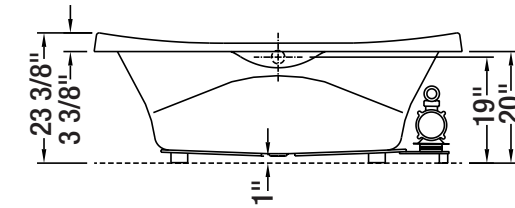
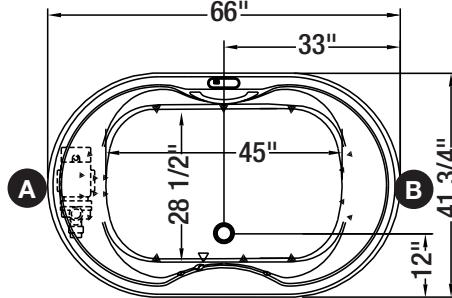
102757



102759



102865



- (A) : Specify blower and/or pump position when ordering
- (B) : Specify blower and/or pump position when ordering
- (▲) : Indicates Hydromax and Hydroeffect whirlpool jet positioning
- (•) : Indicates Aerofeel and Aeroeffect airjet positioning
- (△) : Indicates suction positioning
- (—) : Indicates standard grab bar positioning

Note: Backjets on same side as blower

All dimensions are approximate and subject to change without any prior notice. Please refer to installation guide before installing the unit.

Bathtub base includes anti-vibration Neutra-Phone™ leg supports (not shown).

Certifications



Applicable Standards

- ANSI Z124.1
- IAPMO/UPC
- UL1795
- CSA B45/CSA C22.2 NO.218.2

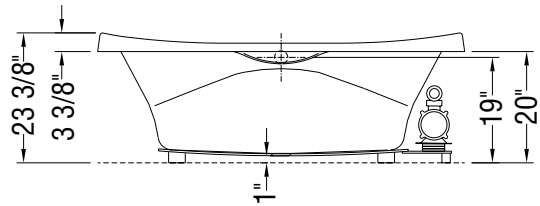
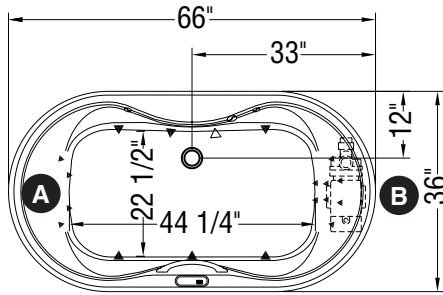
QUEBEC AND ATLANTIC
600, Cameron, Sainte-Marie
(Québec) G6E 1B2 Canada
Tel.: 1-888-361-2045
Fax: 1-877-361-2044 • (514) 354-7713
After Sales Service:
Tel.: 1-877-GET-MAAX (1-877-438-6229)
Fax: 1-866-819-1324
www.maax.com

ONTARIO
Tel.: 1-800-565-4025
Fax: 1-800-577-8265
After Sales Service:
Tel.: 1-877-GET-MAAX
(1-877-438-6229)
Fax: 1-866-819-1324
www.maax.com

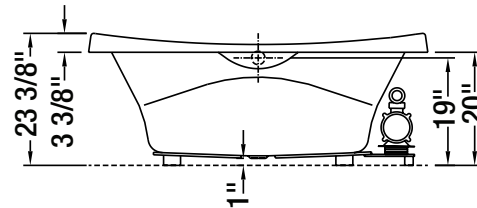
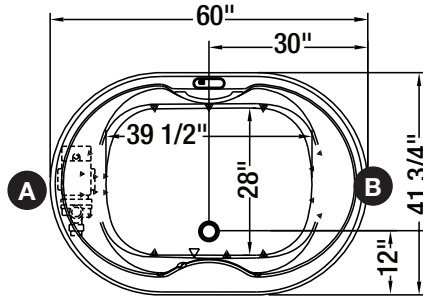
WESTERN CANADA
4225 Spallumcheen Drive
Armstrong (British
Columbia)
VOE 1B6 Canada
Order Desk:
Tel.: 1-800-797-9330
Fax: 1-888-514-4442
www.maax.com

Living[®]

102761



102863



- A** : Specify blower and/or pump position when ordering
- B** : Specify blower and/or pump position when ordering
- (▲) : Indicates Hydromax and Hydroeffect whirlpool jet positioning
- (•) : Indicates Aerofeel and Aeroeffect airjet positioning
- (△) : Indicates suction positioning
- (—) : Indicates standard grab bar positioning

Note: Backjets on same side as blower

All dimensions are approximate and subject to change without any prior notice. Please refer to installation guide before installing the unit.

Bathtub base includes anti-vibration Neutra-Phone™ leg supports (not shown).

Certifications



Applicable Standards

- ANSI Z124.1
- IAPMO/UPC
- UL1795
- CSA B45/CSA C22.2 NO.218.2