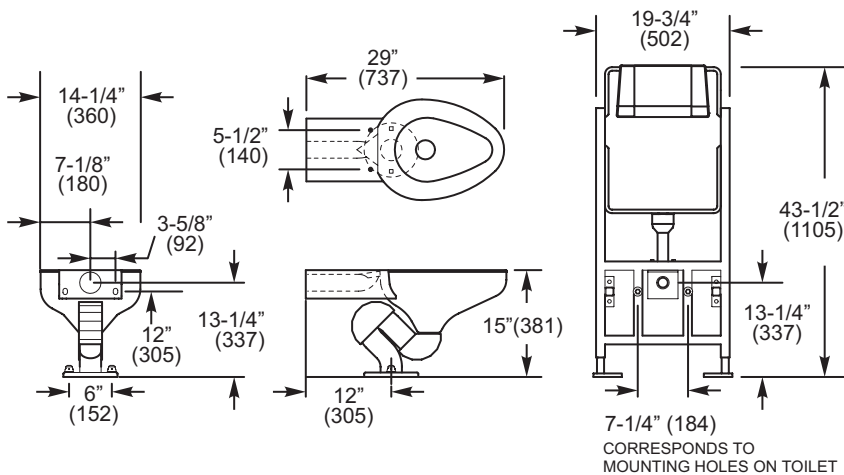


# NEO-METRO® Collection

## METĀAL Toilet

### Features

- DESIGNED TO WORK WITH GEBERIT® CONCEALED TANK AND CARRIER SYSTEM (Tank & Carrier Sold Separately from Fixture)
- One-Piece Cistern Flush Type Toilet with Exposed P-Trap
- 16-Gage Stainless Steel Construction
- Satin Finish with Mira High Polish Accents on P-Trap
- Elongated Toilet Bowl; Punched for Top Mounted Toilet Seat (1/4-20 x 1" Screws Provided, Seat Sold Separately)



### Ordering Options

- 8957 ON-FLOOR Mounting (Floor Waste), Satin Finish with Mira Finish Accents on P-Trap

See separate specification sheet for Geberit Concealed Tank and Carrier System with Accessories

**PRODUCT Specification** . . . This cistern flush style toilet is designed to work with a Geberit® concealed tank and carrier system (tank and carrier sold separately). The toilet features an exposed decorative, geometric P-trap with a floor waste rough-in 12" (305 mm) from wall. Toilet is fabricated from 16-gage, Type 304 stainless steel. Bowl is elongated and shall be punched for a toilet seat. Seat is sold separately.

**PLUMBING Specification** . . . The toilet must use a Geberit® concealed tank and carrier system. Geberit® carrier requires 19-3/4" (502 mm) clearance between 2" x 6" (51 mm x 152 mm) wall studs. Tank releases an average 1.6 gallons (6 liters) per flush. Waste is through the floor 12" (305 mm) from the wall.

Approved for Manufacturing

All dimensions are nominal and subject to manufacturer's change without notice.

Company	Project Name	Authorized Signature	Name Written Clearly	Date
---------	--------------	----------------------	----------------------	------

Neo-Metro Collection is a division of Acorn Engineering Company

Call Us at (800) 591-9050 • Web Site: [www.neo-metro.com](http://www.neo-metro.com)

NEO-METRO Collection • P.O. Box 3527 • City of Industry, CA 91744 USA • Phone (626) 855-4854 • Fax (626) 937-4725

TS 8957  
PAGE 1 OF 2

L1000759 (5/1/02)

# NEO-METRO® Collection

**Geberit®**

## Concealed Tank and Carrier System with Accessories



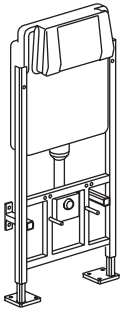
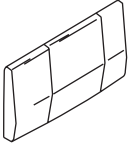


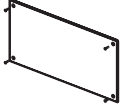
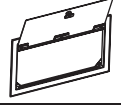
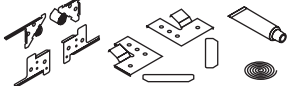
**Euro-Urban Contour Toilet**



**Metāāl Toilet**

### **Geberit® CONCEALED TANK AND CARRIER SYSTEM WITH ACCESSORIES FOR USE WITH EURO-URBAN CONTOUR TOILET OR METĀĀL TOILET**

Elimination of the visible tank creates attractive decorator options for today's efficient bathroom designs. Geberit® tank releases 1.6 gallons (6 liters) per flush. Carrier requires 19-3/4" (502 mm) clearance between 2" x 6" (51 mm x 152 mm) wall studs. Includes elbow waste connector (used only for the Euro-Urban Contour Toilet.) Choice of Large Satin Finish Panel, Large Mira Finish Panel, or Small Mira Finish Pneumatic Push Button. (Access door or panel solution recommended for Small Push Button option.)

		PRODUCT DESCRIPTION	MODEL NUMBER
		<b>Geberit® Concealed Tank and Carrier System</b> with <i>Geberit</i> Large <i>Satin</i> Finish Push Panel 13-3/8" (300 mm) x 7-5/16" (185 mm)	-CTC
		<b>Geberit® Concealed Tank and Carrier System</b> with <i>Geberit</i> Large <i>Mira</i> Finish Chrome Plated Brass Push Panel 13-3/8" (300 mm) x 7-5/16" (185 mm)	-CTCHP
		<b>Geberit® Concealed Tank and Carrier System</b> with Small <i>Mira</i> Finish Pneumatic Push Button 4-1/4" (108 mm) x 4-1/4" (108 mm)	-CTCB
	Access Panel for CTCB Option 7-1/2" (191 mm) x 13-1/2" (343 mm)	4080-020-001 ( <i>Satin</i> Finish) 4080-022-001 ( <i>Mira</i> Finish) 4080-023-001 ( <i>Cosmic</i> Finish)	
	Access Door for CTCB Option with Screwdriver Latch 7-1/2" (191 mm) x 13-1/2" (343 mm)	0530-050-001 ( <i>Satin</i> Finish) 0530-055-001 ( <i>Mira</i> Finish) 0530-060-001 ( <i>Cosmic</i> Finish)	
	<b>Geberit® Access Door Assembly Kit</b> for CTCB Option Make an Access Door with materials to match your decor (eg. tile, wall paper)	2954-715-000	

*All dimensions are nominal and subject to manufacturer's change without notice.*

**Call Us at (800) 591-9050 • Web Site: [www.neo-metro.com](http://www.neo-metro.com)**

NEO-METRO Collection • P.O. Box 3527 • City of Industry, CA 91744 USA • Phone (626) 855-4854 • Fax (626) 937-4725