

Specification



U.4790X • U.4791L U.6793 • U.6792 • U.6794



Finishes

- Polished Chrome
- Polished Nickel
- Satin Nickel
- Inca Brass
- English Bronze
- Polished Chrome/Inca Brass
- Satin Nickel/Inca Brass

Bridge Faucet

- Cross handles U.4790X • Metal levers U.4791L (no porcelain levers available)
- Faucet only — must also order wall or deck unions U.6793 or U.6792 (see below)
- 13 1/2" height from inlets • 9 1/4" spout reach • Swivel spout
- 1/4-turn ceramic disc valve • Hand painted hot/cold indicators U.4791X only

Deck Unions U.6793

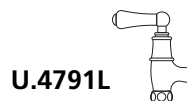
- 1/2" male NPSM supplies with 1/2" male adaptors • 2 3/4" high
- 1 1/4" projection • Priced per set of 2 • 2 3/8" Max deck depth
- 16 1/4" height from Deck to top of U.4790X or U.4791L spout • 1" max cutout

Wall Unions U.6792

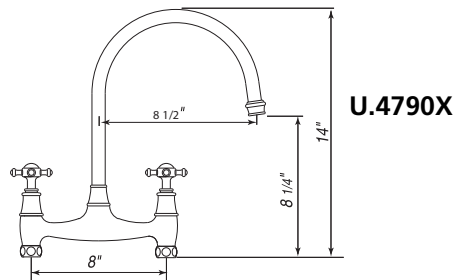
- 1/2" male NPSM supplies with 1/2" NPT adaptors • 1 3/4" projection
- 1 1/4" height from inlet to outlet threads • Priced per set of 2
- 15 1/4" height from bottom of unions to top of U.4790X or U.4791L spout
- 1" max cutout

Deck Unions (Straight) U.6794

- 1/2" male NPSM supplies with 1/2" NPT adaptors • Priced per set of 2
- 1" max cutout • 2 3/8" height of union from deck to connecting nut on bottom of faucet



U.4791L



U.4790X

Temp Range:

Min 34F°
Max 185F°

Recommended working pressure:

Min 15psi
Max 75psi

ROHL

The Experience of Authentic Luxury™

www.rohlhome.com

Specification

PERRIN & ROWE
MAYFAIR LONDON

U.4790X • U.4791L U.6793 • U.6792

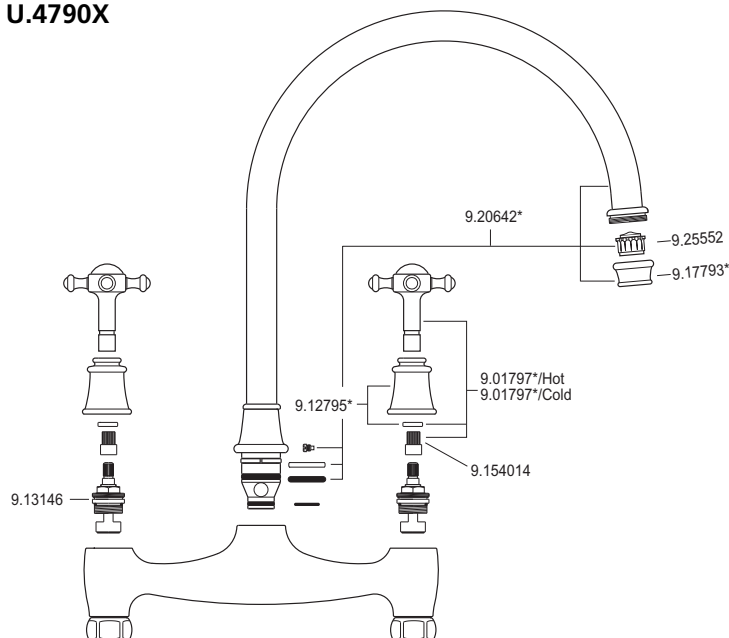
Bridge Faucet

- Cross handles U.4790X • Metal levers U.4791L (no porcelain levers available)
- Faucet only — must also order wall or deck unions U.6793 or U.6792 (see below)
- 13 1/2" height from inlets • 9 1/4" spout reach • Swivel spout
- 1/4-turn ceramic disc valve • Hand painted hot/cold indicators U.4791X only



Parts Breakdown

U.4790X



Perrin & Rowe is a trademark of Avilon Limited.

Consult your local Rohl showroom for additional information and specifications. For complete warranty details and a list of showrooms, go to www.rohlhome.com.

ROHL

The Experience of Authentic Luxury™

www.rohlhome.com

Specification

PERRIN & ROWE
MAYFAIR LONDON

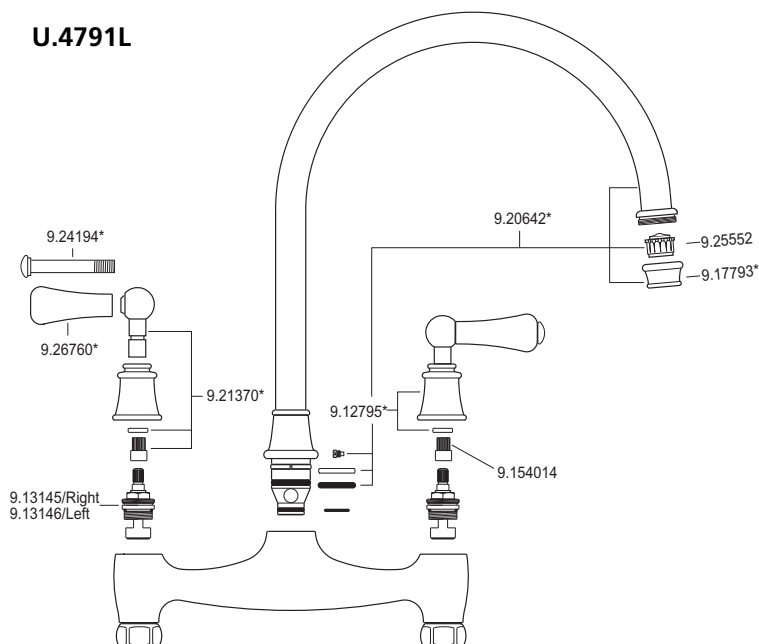
U.4790X • U.4791L U.6793 • U.6792



Parts Breakdown

Bridge Faucet

- Cross handles U.4790X • Metal levers U.4791L (no porcelain levers available)
- Faucet only — must also order wall or deck unions U.6793 or U.6792 (see below)
- 13 1/2" height from inlets • 9 1/4" spout reach • Swivel spout
- 1/4-turn ceramic disc valve • Hand painted hot/cold indicators U.4791X only



Perrin & Rowe is a trademark of Avilon Limited.

Consult your local Rohl showroom for additional information and specifications. For complete warranty details and a list of showrooms, go to www.rohlhome.com.

Specification



U.4790X • U.4791L U.6793 • U.6792

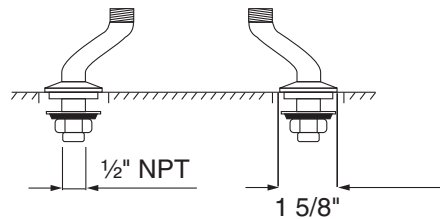


Parts Breakdown

Deck Unions U.6793

- 1/2" male NPSM supplies with 1/2" male adaptors • 2 3/4" high
- 1 1/4" projection • Priced per set of 2 • 2 3/8" Max deck depth
- 16 1/4" height from Deck to top of U.4790X or U.4791L spout • 1" max cutout

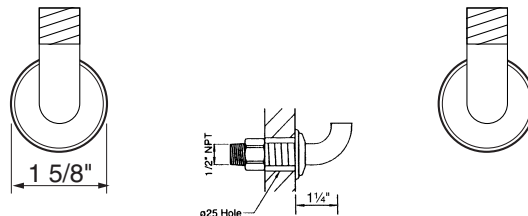
U.6793



Wall Unions U.6792

- 1/2" male NPSM supplies with 1/2" NPT adaptors • 1 3/4" projection
- 1 1/4" height from inlet to outlet threads • Priced per set of 2
- 15 1/4" height from bottom of unions to top of U.4790X or U.4791L spout
- 1" max cutout

U.6792



Deck Unions (Straight) U.6794

- 1/2" male NPSM supplies with 1/2" NPT adaptors • Priced per set of 2
- 1" max cutout • 2 3/8" height of union from deck to connecting nut on bottom of faucet

Unions
U.6794

